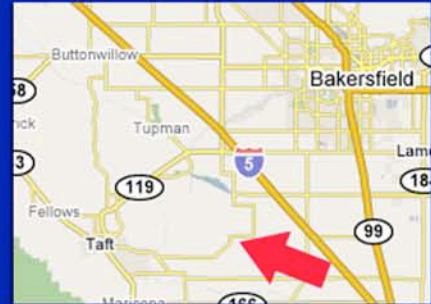


**FOR SALE- \$1,800,000**  
**9.55 +/- ACRES INDUSTRIAL LAND**  
**WITH RAILROAD**  
**19329 SOUTH LAKE ROAD, TAFT, CA**



**Zoning: M3**

**Existing 2,275 sf office and 1,800 sf shop**

**6,000 feet, 9 fully operational railspurs serviced by Sunset Railroad**

**Utilities on site**

**Phase I and II are completed**

**Complete Geotechnical Reports**

**Approved: Tankfarm and 4,000 sf Office building**

**Application filed for a 25 million gallon per year bio-diesel plant**

**Don't miss this rare opportunity!**

**Commission for selling broker: 3%**

*Susanna Falucskai Denes*

**Real Estate Broker**

831.236.8155

falucskai@sbcglobal.net

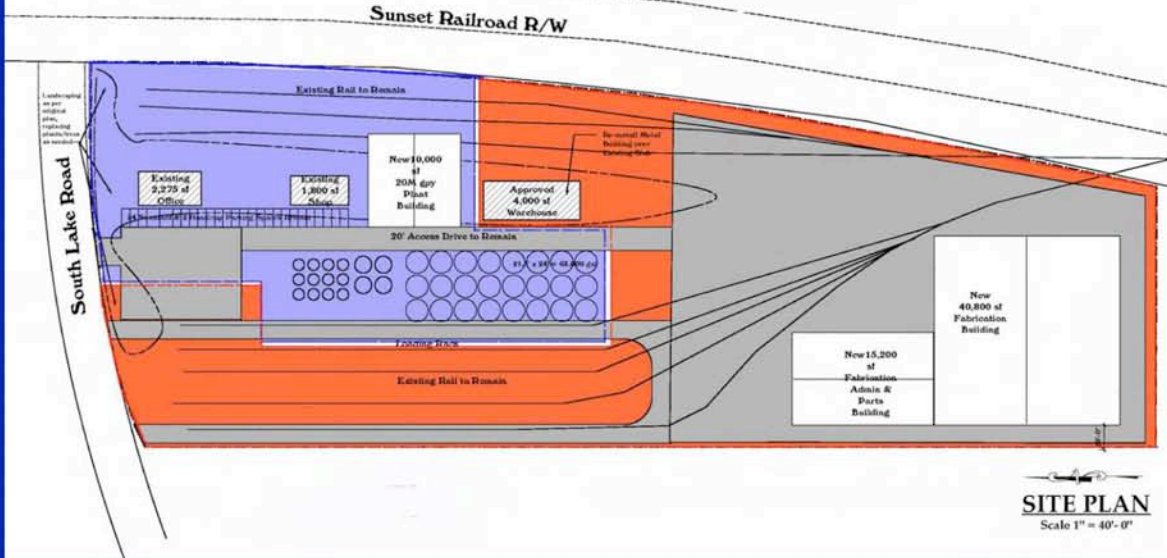
PO Box 221653

Carmel, CA 93922

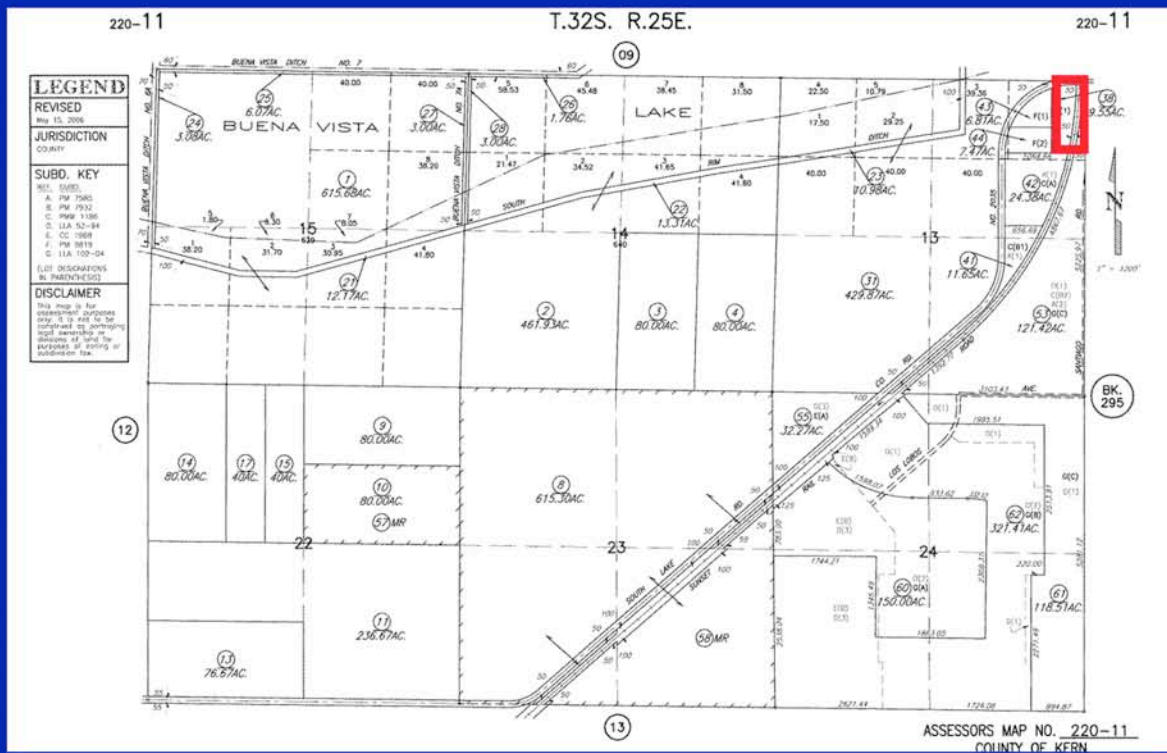
www.falucskai.com

Lic #: 01124665

**FOR SALE- \$2,499,000**  
**9.55 +/- ACRES INDUSTRIAL LAND**  
**WITH RAILROAD**  
**19329 SOUTH LAKE ROAD, TAFT, CA**



**SITE PLAN**  
 Scale 1" = 40'-0"



*Susanna Falucskai Denes*  
 Real Estate Broker

831.236.8155  
 falucskai@sbcglobal.net  
 PO Box 221653  
 Carmel, CA 93922  
 www.falucskai.com  
 Lic #: 01124665

**FOR SALE- \$2,499,000**  
**9.55 +/- ACRES INDUSTRIAL LAND**  
**WITH RAILROAD**  
**19329 SOUTH LAKE ROAD, TAFT, CA**



*Susanna Falucskai Denes*  
Real Estate Broker

831.236.8155  
falucskai@sbcglobal.net  
PO Box 221653  
Carmel, CA 93922  
www.falucskai.com  
Lic #: 01124665